





Antron® Lumena™ carpet fibre has been celebrating the joy of vivid colour for over 40 years, bringing hardwearing, stain-resistant and lasting tones to high-performance and architecturally appealing carpets.

For 2018, bringing together the efforts of our global development team, customer feedback, workshops and the research of the Global Colour Trend Forecast 2017/2018; we've launched 19 brand new colours in the Antron® Lumena™ range. These new colours will continue to uphold Antron® Lumena™ as the carpet fibre of choice for designers not willing to compromise on aesthetics or function.

Found in the 1385dtex quality of this multi-hollow yarn that has unparalleled depth of tone, these new colours give global relevance to the Antron® Lumena™ palette. Whether tone-on-tone nuances in Sepia, Gunmetal and Gull, the potency of Fuchsia or the Aquatic Oceanside; these new colours ensure that 1385dtex Antron® Lumena™ fibre remains rich in scope and connected to prevalent trends in commercial interiors.

Fulfilling our ambition to keep Antron® Lumena™ 1385dtex eminently usable, inspiring and incredibly versatile, these new colours represent the next evolution in lasting colours for aesthetically outstanding carpet designs.



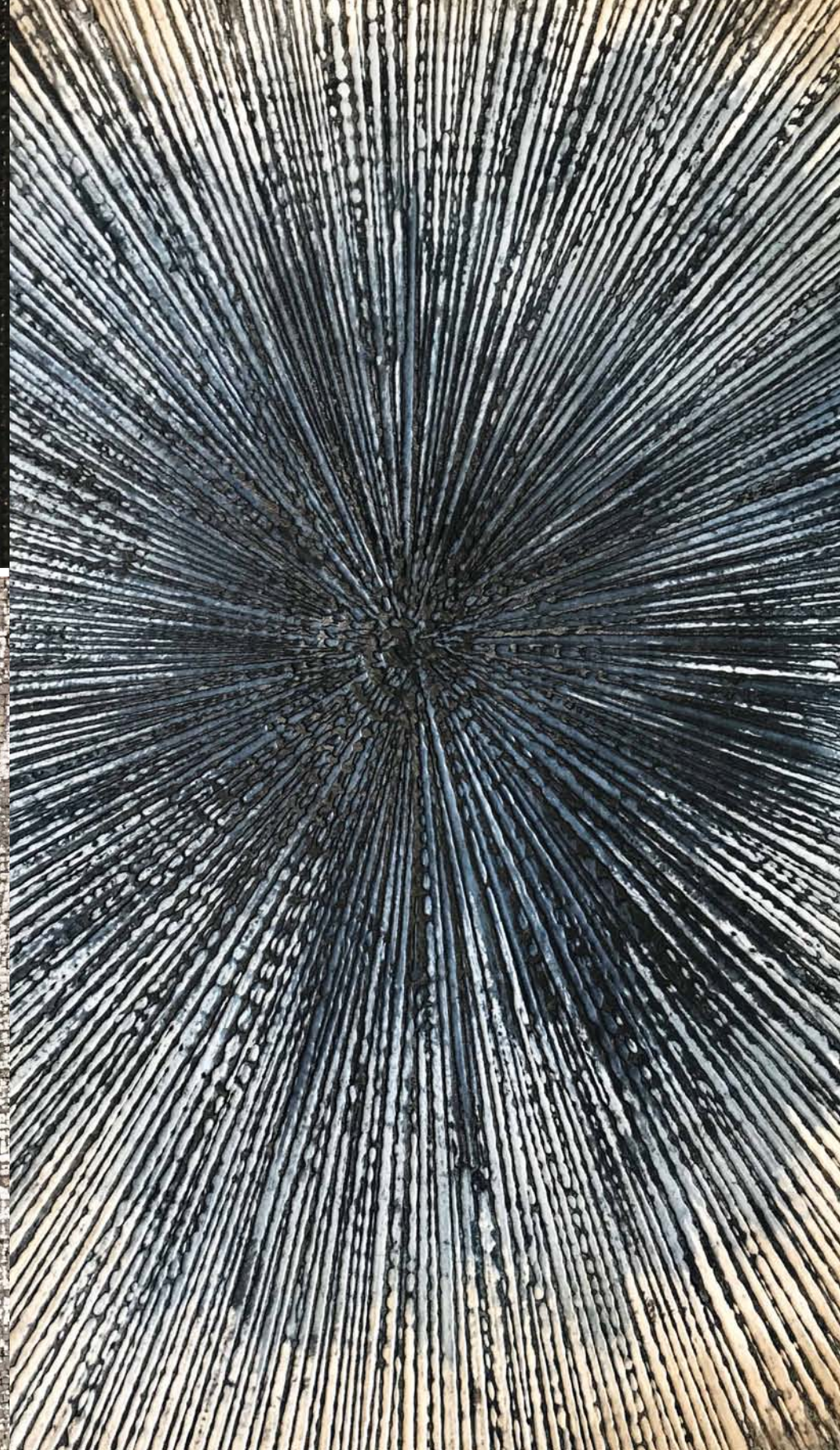
C138A
Gunmetal



C122A
Sepia

C155A
Gull

C111A
Inkwell



C763A
Cove

C761A
Suit Navy



C120A
Mineral

G170
Silver

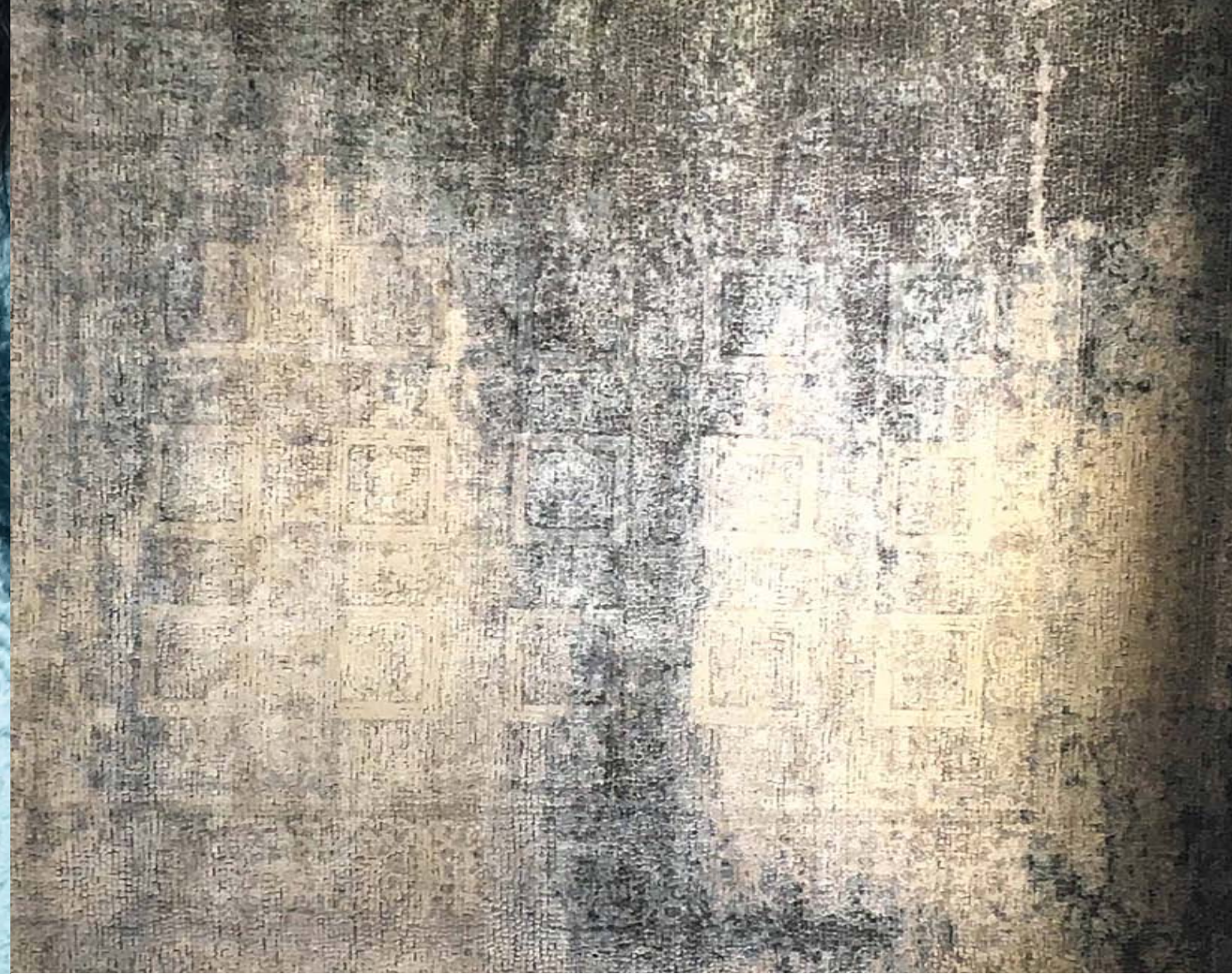
C152A
Granite



C296A
River Rock

C295A
Tarragon

C281A
Antique Olive



C148A
Grunge

C157A
Blast Gray

C127A
Anthracite



C490A
Bold Gold

3710
Lemon Zest



C161A
Fog



C273A
Mushroom



C292A
Cactus



G289A
Ivory

C271A
Night Owl

C493A
Meadow



C873A
Fuchsia



C401A
Firecracker

C356A
True Red

C464A
Paprika

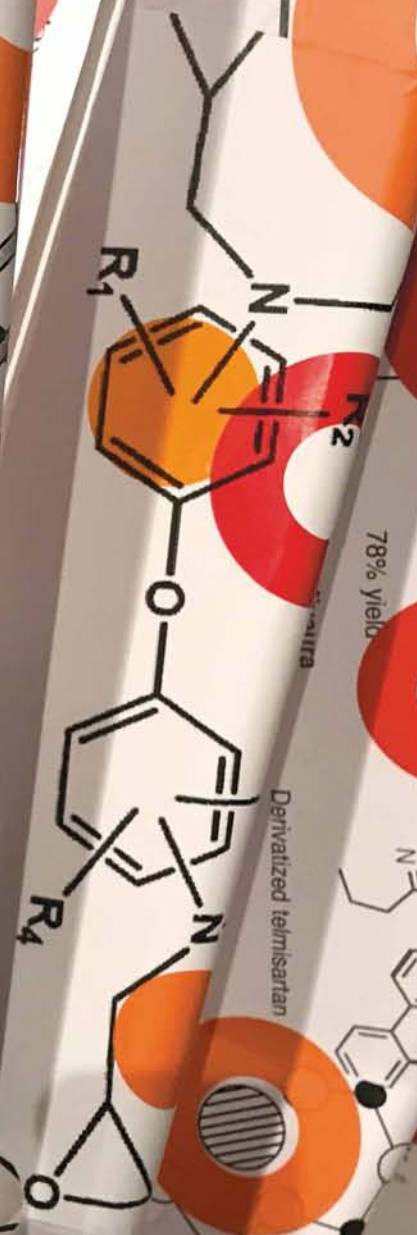


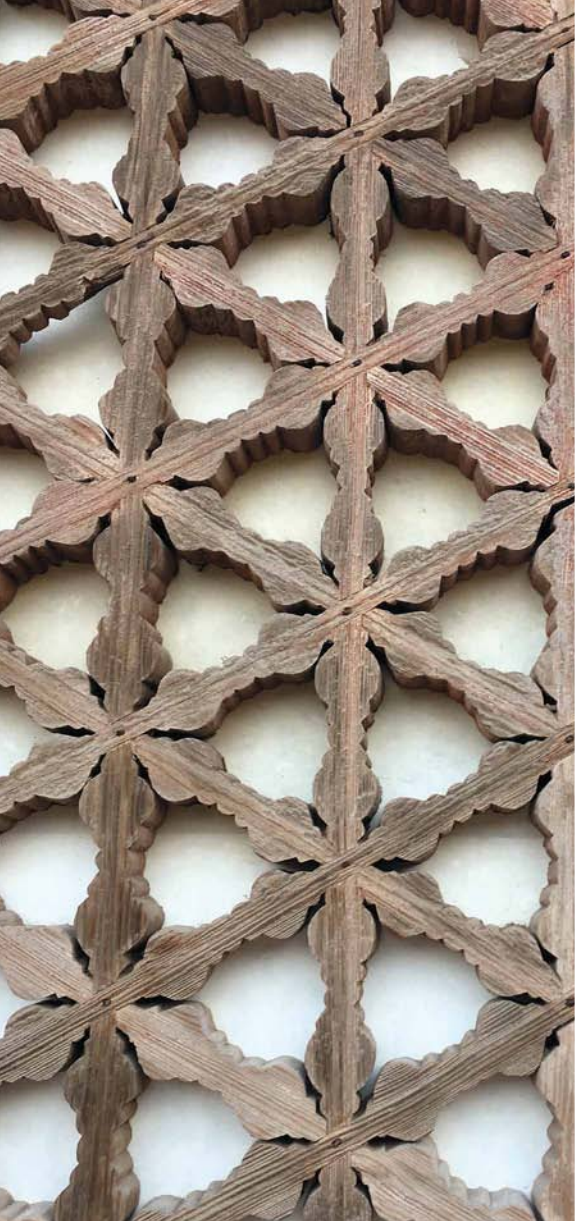
DAMAGING AGENT

X-rays
Oxygen radicals
Alkylating agents

Replication
errors

UV-light
Polycyclic Aromatic
Hydrocarbons
Anti-tumour agents
(Cis-Pt, MMC)





C459A
Thatched Roof



C472A
Burlap



C249A
Woodgrain



C199A
Umber

C201A
Coffee Bean

9955A
French Lilac

C200A
Grounded



C172A
Brume



C198A
Chia



C128A
Basalt

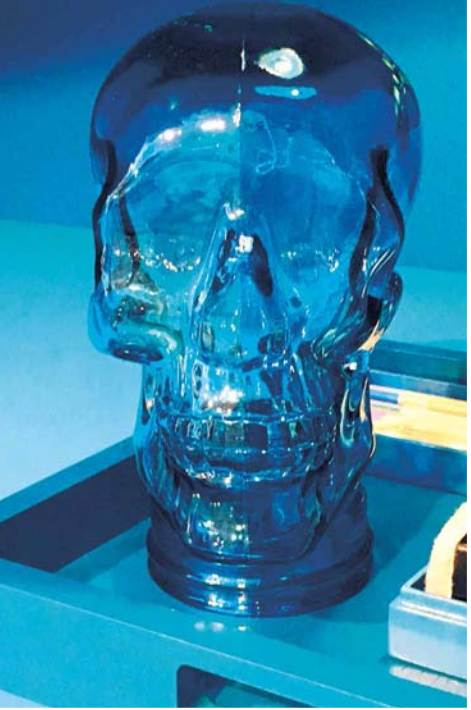
C146A
Cloud

C165A
Smoke

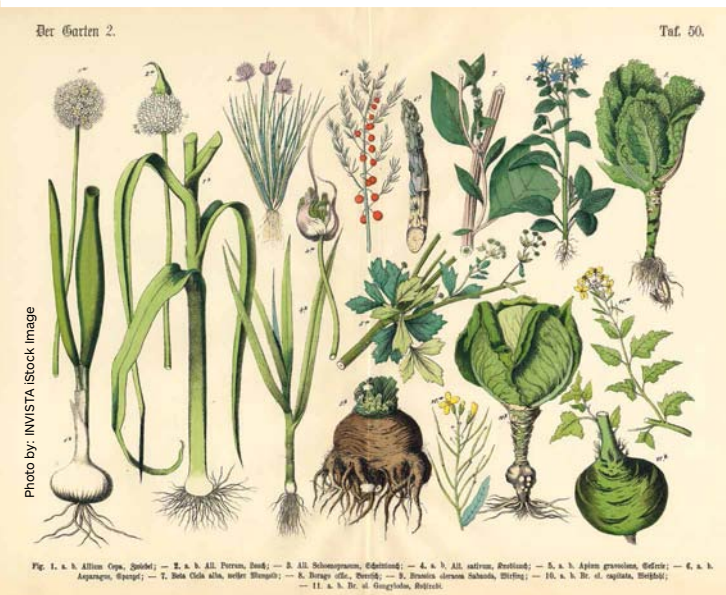
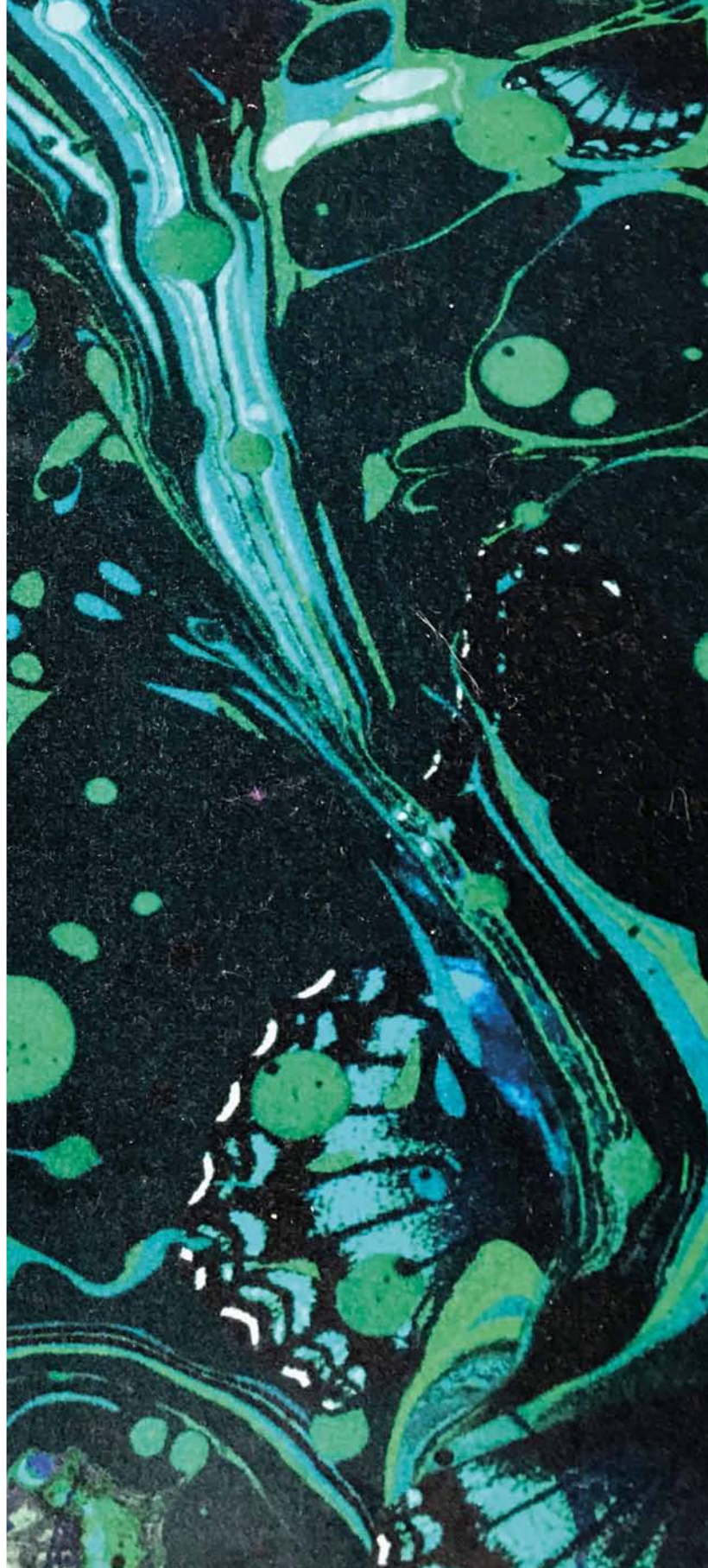
C137A
Phantom



C392A
Sakura



C646A
Oceanside



C527A
Jungle Green

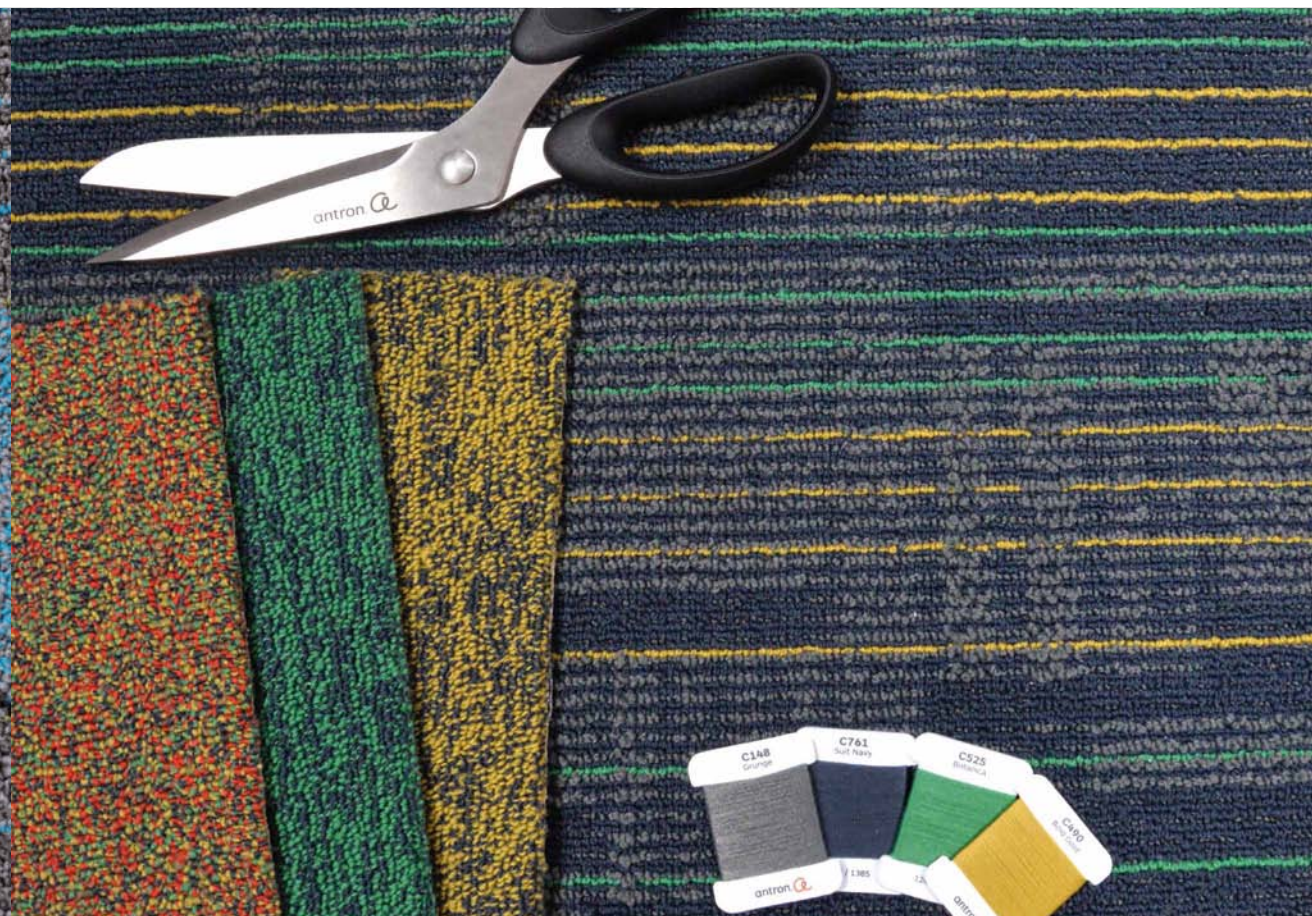
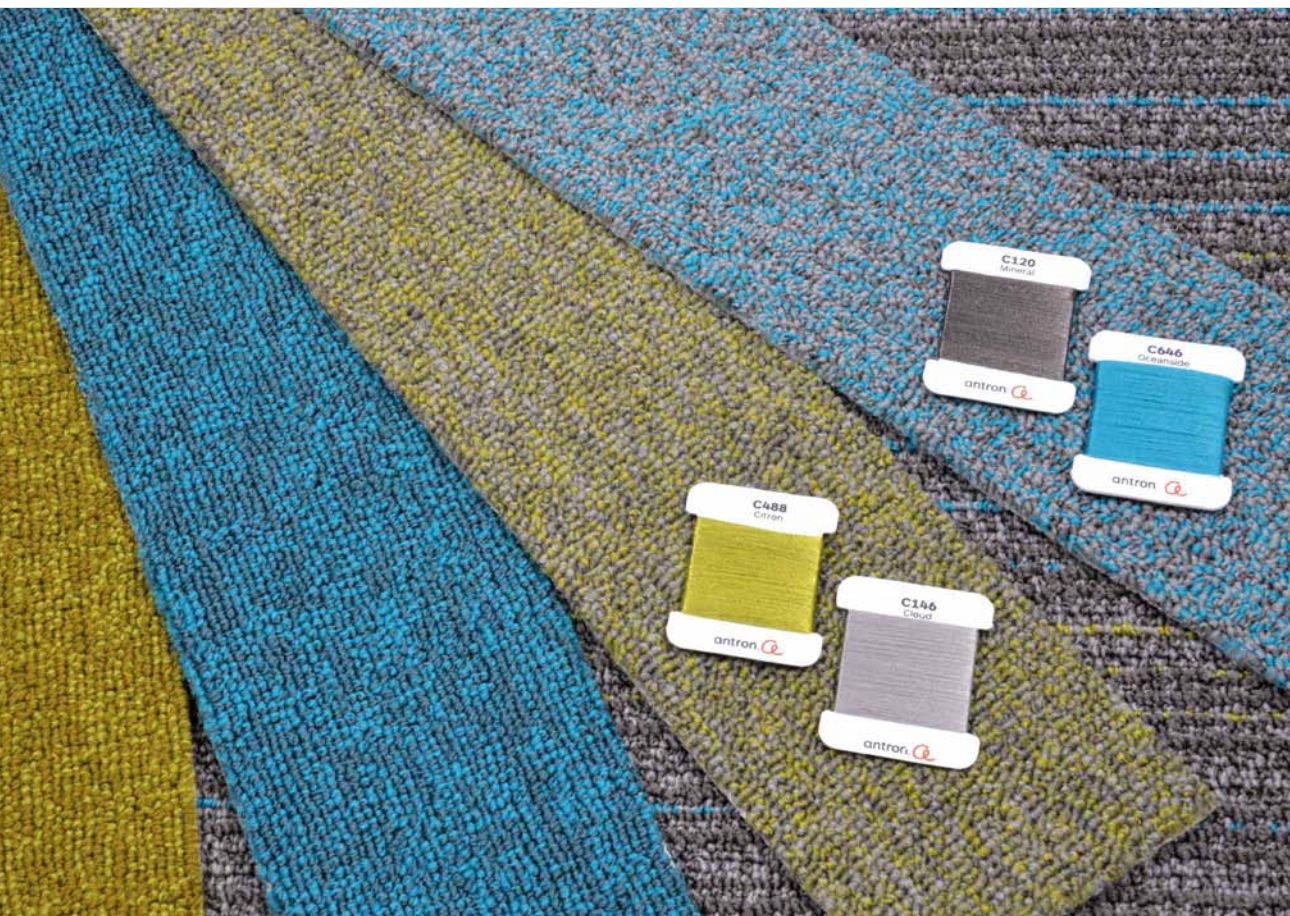
C525A
Botanica



C488A
Citron

6776A
Asparagus

6199A
Cool Lime





C111A

Inkwell



C761A

Suit Navy



C646A

Oceanside



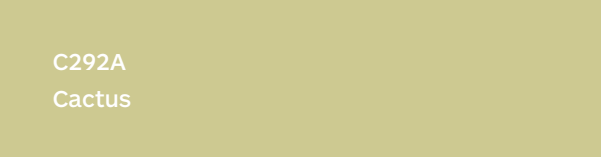
C525A

Botanica



C488A

Citron



C292A

Cactus



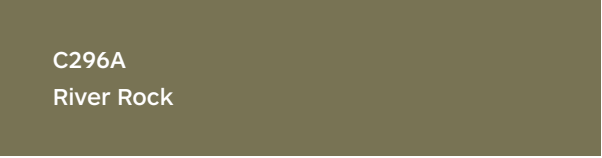
C472A

Burlap



C490A

Bold Gold



C296A

River Rock



C249A

Woodgrain



C200A

Grounded



C120A

Mineral



C148A

Grunge



C198A

Chia



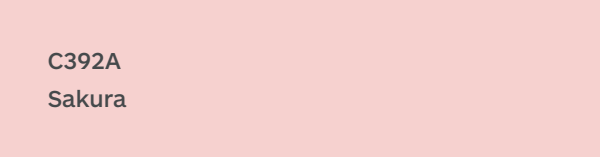
C146A

Cloud



C172A

Brume



C392A

Sakura



C401A

Firecracker



C873A

Fuchsia

All photos by Jess R. Herring